



# KLASS FALSE FLOORING SYSTEMS

Management For Everything



## KLASS FALSE FLOORING SYSTEMS - TECHNICAL GUIDELINES.

### ■ FEATURES OF TILES :

1. All steel construction & cavity filled with cement slurry & epoxy
2. The tile is powder coated
3. Bottom plate is having 64 round embossing with spot welding to weld top & bottom plate
4. Shall have a maximum flange of 12mm on all four sides (for resting on stringers)
5. Panels shall rest on the grid formed by the stringers, which are bolted onto the pedestals



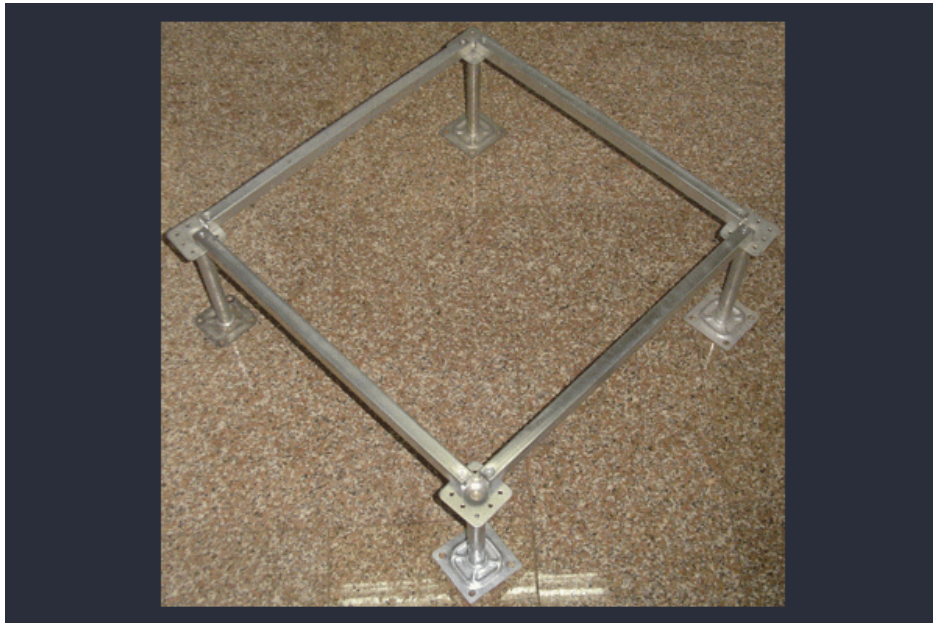
# KLASS FALSE FLOORING SYSTEMS - TECHNICAL GUIDELINES.

## ■ FEATURES :

1. Bare Panel System is having special stringer with 2mm Rubber Gasket, which prevent noise while walking.
2. System is "Lay In" system hence, easy to remove & re-fix since corners are not screwed to the pedestal head.
3. Tiles are supported in all the four sides since our system is stringer based which do not undulate/bend at the sides
4. Special weather coating on back surface of the tiles
5. Fire-proof, water-proof and dust-proof.
6. Fast and accurate installation.
7. Treated with static electricity painting, good anti-corrosion.
8. High precision of dimensions, good interchangeability.
9. All steel structure with high strength, strong anti-impact ability.
10. Convenient for both dismantling and assembling.
11. Eco-friendly.



## KLASS FALSE FLOORING SYSTEMS - TECHNICAL GUIDELINES.



### ■ PEDESTAL :

1. Top plate size: 75 mm x 75 mm x 3 mm.
2. Bottom plate size: 100 mm x 100 mm x 2 mm.
3. Pipe thickness: 2.5 mm
4. Height: 150 to 800 mm.



# KLASS FALSE FLOORING SYSTEMS - TECHNICAL GUIDELINES.

## Typical Uses:

1. Server room.
2. Individual offices.
3. Conference rooms.
4. Meeting rooms.
5. Auditorium space.
6. Showrooms.



## KLASS FALSE FLOORING SYSTEMS - TECHNICAL GUIDELINES.

### ■ STRINGER

1. All steel construction.
2. Seamless rectangular shape.
3. Rubber gasket on one side for dampening effect.

### ■ STRINGER FEATURES :

1. Size: 22mm x 26mm x 573mm
2. Thickness: 1.0 mm
3. Shape: seamless rectangular shape
4. Hole Distance: 550 mm (centre to centre)



# KLASS FALSE FLOORING SYSTEMS - TECHNICAL GUIDELINES.

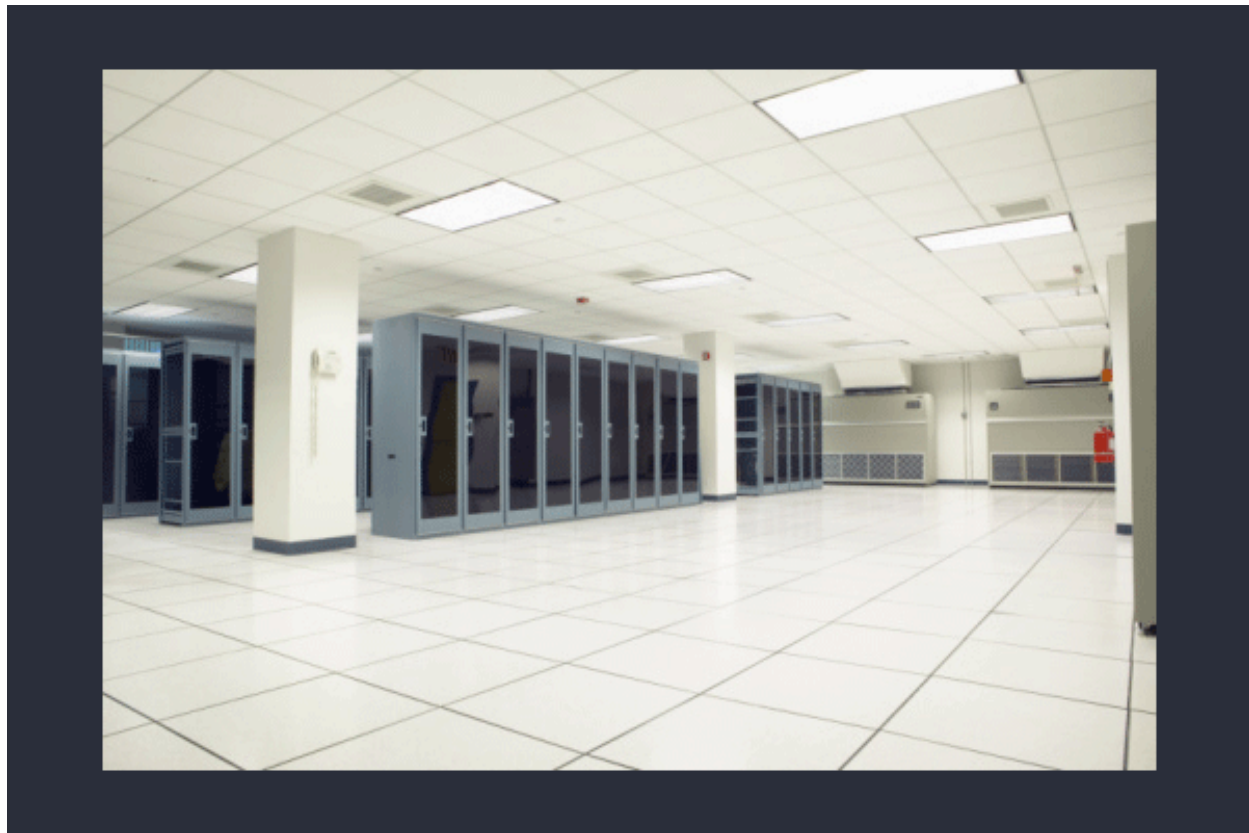


## PEDESTAL :

1. All steel construction zinc plated
2. Threaded bolt & nut for levelling adjustment on top & bottom
3. Various heights are available
4. Pedestal can carry more than 3000 kg axial load without any deformation



## KLASS FALSE FLOORING SYSTEMS - TECHNICAL GUIDELINES.



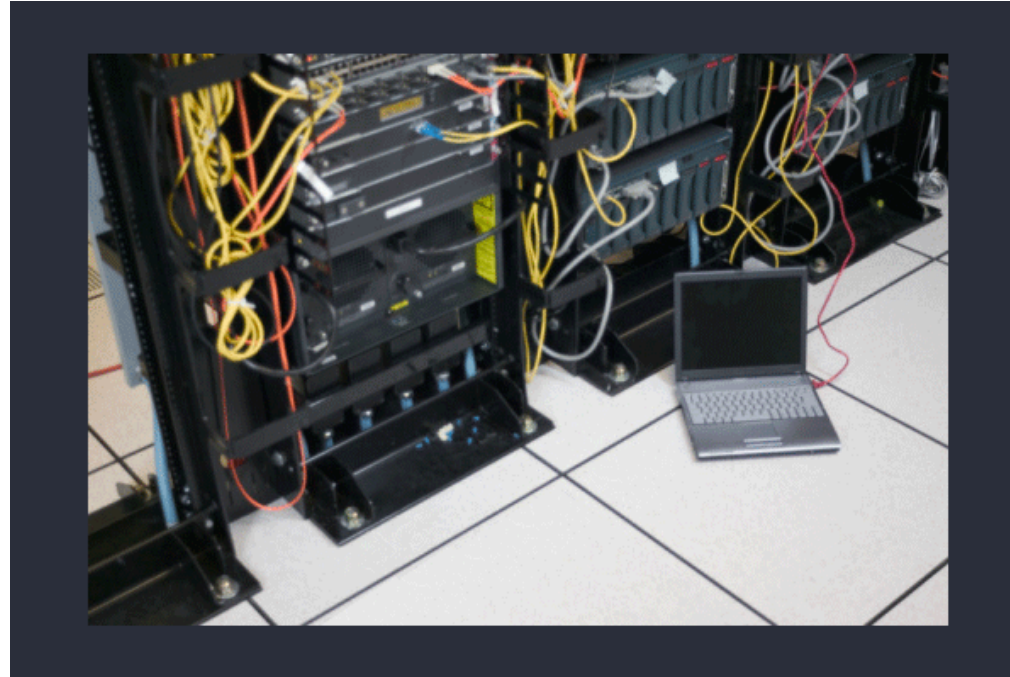
### Tiles :

1. Size: 600 x 600 mm.
2. Thickness: 30/35 mm.





# KLASS FALSE FLOORING SYSTEMS - TECHNICAL GUIDELINES.



	GRADE	DIMENSION	CONCENTRATED LOAD			IMPACT LOAD	ULTIMATE LOAD	UNIFORM LOAD
			(LB)	(N)	(KG)			
>	(FS)	(MM)	(LB)	(N)	(KG)	(N/M2)	(N/M2)	(N/M2)
>	800	600 X 600 X 30 600 X 600 X 35	800	3350	363	670	14520	9600
>	1000	600 X 600 X 35	1000	4450	453	670	16720	15000
>	1250	600 X 600 X 35	1250	5550	567	670	22000	20000
>	1500	600 X 600 X 35	1500	6660	680	780	26400	23000



# KLASS FALSE FLOORING SYSTEMS.



Klass Interiors  
Functionality with simplicity & Elegance

**Showroom Address:**

131, Dheeraj Heritage Comm. Complex,  
1st Floor, Next to RAK Ceramics, S.V. Road,  
Milan Jn., Santacruz (W), Mumbai-400 054  
Tel.: 022-6710 7334/98690 14475

